



TYPES OF financial aid

Ranked #4 Best Value Public College - Forbes

The Free Application for Federal Student Aid (FAFSA) can be filed starting October 1 - available at: www.fafsa.gov. Make sure you complete it before the March 2 priority filing deadline. Based on your FAFSA and other information you submit, the Financial Aid Office will determine your eligibility for a variety of funding options, including scholarships, grants, work-study programs and loans. **AB 540 eligible students who are not U.S. citizens or permanent residents can apply for aid via the Dream Act application.** International students are not eligible for university, state, or federal financial aid. We urge international students to research scholarship opportunities from private organizations both within the US and your home country.

The UCLA Scholarship Resource Center is available to help you identify scholarships for which you are qualified. Other resources including community service organizations in your hometown, faith-based groups and your college career/college counseling center are options to explore. We also encourage you to initiate a search for additional scholarship resources via the internet. Online searches will reveal various websites and databases dedicated to helping you locate the best scholarship opportunities. For information about searching for UCLA scholarships and other outside scholarships, please review our Scholarship Resource Center website at: www.scholarshipcenter.ucla.edu.

Also available to California residents are the UC Blue and Gold Opportunity Plan and the Middle Class Scholarship Program (MCSP). These both qualify as grants, which are rewards that the recipient does not have to repay. These are mostly awarded based on need and require submission of the Free Application for Federal Student Aid (FAFSA) or the California Dream Act application by March 2nd.

IMPORTANT DATES AND DEADLINES

AUGUST 1
Application opens for Fall 2021

OCTOBER 1
Filing period opens for Free Application for Federal Student Aid (FAFSA) and Dream Act applications

NOVEMBER 1-30
Application filing period

JANUARY 31
Deadline to submit your Transfer Academic Update (TAU)

MARCH 2
Deadline for applicants to submit your FAFSA or Dream Act application

LATE-APRIL
Admission notification (transfer applicants)

JUNE 1
Deadline to submit your enrollment deposit, preliminary transcripts, and applications for on-campus housing

CONTACT INFORMATION AND RESOURCES

UCLA Undergraduate Admission
1147 Murphy Hall
Los Angeles, CA 90095-1436
ugadm@admission.ucla.edu
www.admission.ucla.edu

As a land grant institution, UCLA acknowledges the Gabriolino/Tongva peoples as the traditional land caretakers of Tovaangar (Los Angeles basin, Southern Channel Islands).

- UCLA Undergraduate Admission
- @uclaadmission
- @uclaadmission

Printed August 2020

FIND THE YOU IN UCLA

HOW DO TRANSFERS MAKE IT HERE? BY KNOWING THAT UCLA IS POSSIBLE.

Preparing for transfer is about getting ready to succeed at UCLA. It's about making the right choices for you, based on your major and your career focus. **We want you here.** Once you're ready to make the transition to UCLA, **we're here to help.** Why? We know that transfer students add to the fabric of our community and arrive at UCLA with a diversity of interests and backgrounds and the intellectual passion to graduate and succeed.

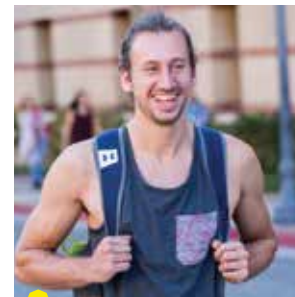
COST OF ATTENDANCE

	Living in a Residence Hall	Living Off Campus
University Fees	\$13,239	\$13,239
Room & Meals	\$17,599	\$15,240
Books & Supplies	\$1,314	\$1,314
Transportation	\$588	\$1,029
Personal	\$1,422	\$1,650
Health Insurance	\$2,605	\$2,605
TOTAL	\$36,767*	\$35,077*

*These figures are accurate at the time of printing. For up-to-date costs, visit www.financialaid.ucla.edu. Non-California residents must pay an additional Nonresident Supplemental Tuition of \$29,754 in addition to the totals listed.



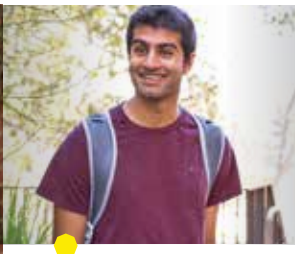
70% of entering transfer students receive financial assistance



#1 UCLA ranked No. 1 college for transfer students



33% of upperclassmen came in as transfer students



94% of admitted transfers come from a California community college



85% of transfers graduate in just over two years at UCLA



Transfer students are guaranteed one year of university housing

ADMISSION AND SELECTION

UCLA has a long tradition of academic and research excellence, so it's no surprise that academics are an important part of our transfer admission and selection criteria. We encourage you to meet with your counselor for individual advising and to review our **Transfer Admission Guide** (www.admission.ucla.edu/transfer) for specific requirements. At a minimum, you must satisfy the following four requirements:

- 1 Complete 60 semester or 90 quarter units of UC-transferable college credit (junior-level standing)
- 2 Complete the UC 7-course pattern (2 English composition, 1 math, 4 electives). Students are encouraged to take required English and math courses as early as possible.
- 3 Complete a significant amount of lower-division major preparation for your intended major
- 4 Maintain a GPA of at least 3.2 in all transferable courses. Note that applicants for highly selective majors should present a strong GPA in order to be competitive for admission.

For California Community College Students, ASSIST (www.assist.org) provides detailed information on transferable courses, major prep requirements, and course articulation.

OTHER FACTORS

In addition to required academic preparation, UCLA also evaluates all non-academic and out-of-classroom achievements, including, but not limited to:

- employment
- family responsibilities
- military service
- honors & awards
- extracurricular activities
- volunteer work
- the student's experiences

For more information about our selection process, please review the **Transfer Admission Guide** www.admission.ucla.edu/Prospect/Adm_tr/tradms.htm



Nearly one in three UC students starts at a community college before graduating from a UC campus

TRANSFER STUDENT RESOURCES

ACADEMIC

UCLA Community Programs Office (CPO)
www.cpo.ucla.edu

Student Transfer Outreach & Mentor Program (STOMP)
www.admission.ucla.edu/stomp

UC Transfer Admission Planner
uctap.universityofcalifornia.edu

Center for Accessible Education
www.cae.ucla.edu

Transfer Alliance Program
www.tap.ucla.edu

Center for Community College Partnerships (CCCP)
www.cccp.ucla.edu

Honors Program
www.honors.ucla.edu

Cluster
www.uei.ucla.edu/clustersupper.htm

Undergraduate Research:
www.ucla.edu/research/undergraduate-research

UCLA AP Credit Chart:
www.admission.ucla.edu/Prospect/APCredit.htm

Meet Your Representative:
www.admission.ucla.edu/myrep

Transfer Student Center
<https://www.transfers.ucla.edu>

FAMILY SUPPORT

Transfer Housing
<https://portal.housing.ucla.edu/student-housing/transfer-students>

Family housing
<https://portal.housing.ucla.edu/student-housing/students-with-families>

Early Care and Education
www.ece.ucla.edu

ADDITIONAL SUPPORT

First To Go
www.firsttogo.ucla.edu

UCLA Veteran Resource Center
<https://www.veterans.ucla.edu/>

LGBT Campus Resource Center
www.lgbt.ucla.edu

INTERNATIONAL

Dashew Center for International Students and Scholars
www.internationalcenter.ucla.edu



CAMPUS RESOURCES

THE BRUIN RESOURCE CENTER

You will be provided many resources to assist you with transitioning into your new academic and personal environment. You've made it to UCLA, but you may need advice navigating a new campus full of choices and opportunities. The **Bruin Resource Center** is here to help you hit the ground running by **connecting** you to the university system and offering **support** and the tools you need to **achieve** your desired goals at UCLA and beyond, go to: www.brc.ucla.edu. The BRC provides support through the following:

Bruin Guardian Scholars

This program was created by UCLA and student advocates to help address the unmet needs of the current and former foster youth at UCLA. The focus of the Guardian Scholars program is to build a welcoming community and to promote the wellness, and academic achievements of foster youth students.

Bruin Guardian Scholars Academy

The mission of BGSA is to provide foster youth with necessary educational and psycho-social support to help them graduate high school and enroll in post-secondary education.

Intergroup Relations Program

The Intergroup Dialogue (IGD) Program engages, supports and educates the UCLA community on issues of social identity, interpersonal and intergroup relations/conflict, prejudice reduction, social justice, and imparts valuable multicultural skills to the UCLA community.

Students with Dependents Program

This program provides caring and personalized support to UCLA students who are parents, guardians, and caregivers at the undergraduate, graduate and professional school level. As a part of Student Affairs, our program is committed to helping students succeed, both as parents and scholars.

Transfer Student Center

The Transfer Student Center's mission is to provide transfer students resources and programming that connects them to the university and supports them in achieving their personal, academic, and professional goals.

Undocumented Student Program

This program offers caring and personalized support to undergraduate and graduate undocumented students. We provide a welcoming and safe space to help students navigate UCLA. The BRC offers mentoring and encouragement, guidance on educational strategies and financial opportunities, and tools to succeed academically and personally.

Collegiate Recovery Program

This program was established in 2016 to provide support to UCLA students on their path to recovery from substance use or other addictive behaviors. The Collegiate Recovery Program is dedicated to providing academic, wellness, and emotional support to students who are in recovery or who are considering recovery.

Bruin Underground Scholars Program

In 2019, the Bruin Underground Scholars program was developed to support the academic experiences of students that identify as formerly incarcerated and/or system impacted.

Bruin McKinney Vento Initiative

Supports students who have been categorized as homeless by the McKinney-Vento Act. We aim to foster academic success among McKinney-Vento students by providing community, case management, and support with basic needs



UCLA is ranked #4 in Best Colleges for Veterans among National Universities by US News & World Report

Veteran Resource Center (VRC)

The Veteran Resource Center (VRC) provides caring and personalized support to UCLA undergraduate and graduate student veterans. We help our veterans navigate UCLA and provide a welcoming space, mentoring from student veterans, guidance on educational benefits, and tools to succeed academically and personally.



FALL 2020
**TRANSFER
ADMIT
PROFILE**

26,000
Applications

3.80
Average G.P.A.
unweighted

24%
Acceptance Rate

**Average G.P.A. varies significantly by major. For a complete list of majors with detailed information, please visit the Admitted Transfer Student Profile webpage at: admission.ucla.edu/prospect/adm_tr.htm*