



**UCLA** UNIVERSITY OF CALIFORNIA, LOS ANGELES



# YOU CAN SEE YOUR FUTURE FROM HERE

COLLEGE. THE WORD CONJURES ALL KINDS OF EMOTIONS — EXCITEMENT, HOPE, UNCERTAINTY. THE CHANGES AND CHALLENGES OF THIS TIME ARE ENORMOUS. THAT'S BECAUSE COLLEGE IS THE LAUNCHPAD OF YOUR LIFE. AND WE WANT YOU TO SOAR TO THE STARS ...

## We Are Changemakers

For over a century, UCLA has been home to dreamers and game changers. People come to these sun-drenched grounds not to be famous or to win awards but to create a brighter future. They become innovators and influencers, groundbreakers and nation builders who move the hearts and minds of the world.

We are idealistic, collaborative and driven. The Bruin spirit imbues everything we do.

Take a look and you'll see why.

RANKED

**NO. 1**

PUBLIC UNIVERSITY  
FOR EIGHTH STRAIGHT YEAR

*U.S. News & World Report*

AMONG THE

**TOP 10**

PUBLIC UNIVERSITIES  
THAT CONTRIBUTE TO  
THE PUBLIC GOOD

*Washington Monthly*

AMONG THE

**TOP 20**

UNIVERSITIES IN THE WORLD

*Shanghai Ranking and  
Times Higher Education*





## Academic and Career Pathways

UCLA offers an astonishing breadth of academic and career opportunities. With more than 140 majors and 3,900 courses to choose from, you can create the education you want. Choose to take multiple majors, or tailor a major with one of our 90+ minors. Our leading-edge curriculum goes way beyond the expected format. And through our Career Center, internships and more, you can build skills and make meaningful connections with people and organizations that align with your goals.

### SMALL, INTERACTIVE CLASSES

Our class sizes are more compact so that you can work closely with our amazing faculty and get to know other students. To that end, nearly two-thirds of our undergraduate classes have less than 30 students. Even smaller are about 200 seminars called *Fiat Lux* (Let There Be Light), each with an intriguing topic and only 10–20 students.

### INTERDISCIPLINARY PROGRAMS

For academic disciplines combined in innovative ways, consider interdepartmental majors like global studies or environmental science. Or neuroscience — it's taught by medical school and life sciences faculty, an exciting collaboration. Our general education Clusters are a year-long series of classes with a unifying theme and are taught by an interdisciplinary team. Each student becomes part of a small learning community.

**ORIGINAL RESEARCH** Over half of our students graduate with research experience, in the humanities as well as social sciences, engineering and laboratory sciences. You can pursue your own research interests or work alongside faculty, do field research or explore library treasures. Some undergraduates even publish in academic journals.

**CAREER SERVICES** Throughout your journey, our Career Center is dedicated to helping you translate your major into a meaningful career. Visit the center to explore different pathways, strengthen your resume, develop interviewing, networking and negotiating skills, connect with an alumni mentor and explore great opportunities that align with your goals.

**INTERNSHIPS** In addition to Hollywood and Silicon Beach, Los Angeles is home to many major industries, including aerospace, bioscience, community organizations, digital media, finance and music. Our Career Center can help you connect with excellent opportunities to gain real-world experience and make contacts in your field of interest.

**STUDY ABROAD** Do amazing academic work in state-of-the-art labs, rainforests, urban settings and marine reefs. Experience different cultures and explore natural wonders. Summer travel study or education abroad will expand your worldview — and UCLA offers 100+ programs in more than 40 countries.





# Renowned Faculty

Pulitzer Prize winners. MacArthur Fellows. National Medal of Science recipients. Members of the National Academies. Educators and life changers. Our faculty members are the foremost experts in their fields. When the world has problems, it comes to us.

The caliber of their work is reflected not only in journal citations, TED talks and awards but also in the average of \$1 billion of research funding UCLA receives each year. Our research produces world-changing innovations, from medical devices that aid stroke victims to nanoparticle water filters and low-cost solar panels as thin and pliable as a plastic bag.

**TRACY JOHNSON**  
CELL BIOLOGIST KNOWN FOR RESEARCH AND INNOVATIVE TEACHING; PROFESSOR OF MOLECULAR, CELL AND DEVELOPMENTAL BIOLOGY; DEAN OF LIFE SCIENCES

**NEIL GARG**  
PRIZE-WINNING CHEMIST; DISTINGUISHED PROFESSOR AND CHAIR OF CHEMISTRY AND BIOCHEMISTRY; FACULTY-IN-RESIDENCE



**ABEL VALENZUELA**  
LABOR STUDIES, URBAN PLANNING AND CHICANA/O AND CENTRAL AMERICAN STUDIES PROFESSOR; DEAN OF SOCIAL SCIENCES; LEADING EXPERT ON IMMIGRATION AND LOW-WAGE WORKERS



# Alumni Success

Nobel Laureates. Rhodes Scholars. And hundreds of Guggenheim Fellows and Fulbright Scholars. Our students go on to greater things, from prestigious professional and graduate schools to remarkable careers that impact the world. They carry their passions and aspirations into their communities and beyond. And graduation rates are uniformly high; 93% for both first-year and transfer students.

With over 650,000 UCLA alumni, you'll be part of a vast network that reaches the top of almost every field. Our alumni center offers robust support, including a portal at [uclaone.com](https://uclaone.com). You'll find alumni groups and networks to meet every need, location and destination, from diversity, affinity and professional networks to regional and international ones.

The connections you make will help shape your career. Our graduates are known for getting jobs with the nation's best corporations, nonprofits and community-based organizations. And they not only take jobs — they make them. College Choice lists UCLA as the No. 4 best college for aspiring entrepreneurs.

93%  
FIRST-YEAR  
GRAD RATE

93%  
TRANSFER  
GRAD RATE

ACCENTURE

NASA

MICROSOFT

PEACE CORPS

DELOITTE

NBC UNIVERSAL

DISNEY

AMAZON

HABITAT FOR HUMANITY

ORACLE

GOOGLE

Broad Art Center



# Campus Life

**THE LOCATION OF THE HILL, UCLA'S RESIDENTIAL COMMUNITY, ISN'T THE ONLY THING YOU'LL LOVE. LIVING ON CAMPUS HELPS YOU GET ORIENTED FASTER AND IMPROVE ACADEMIC PERFORMANCE. AND YOU'LL KNOW THAT YOU BELONG HERE AS YOU LEARN, GROW, CONNECT AND COLLABORATE WITH STUDENTS FROM EVERY WALK OF LIFE. BRUINS LOVE SUPPORTING ONE ANOTHER AND THEIR DYNAMISM, ENERGY AND DETERMINATION ARE INSPIRING.**

THEMED  
LIVING-LEARNING  
COMMUNITIES

FOUR-YEAR  
HOUSING  
GUARANTEE FOR  
FIRST-YEARS

1,000+  
STUDENT  
ORGANIZATIONS

FIRST TO  
100 NCAA  
CHAMPIONSHIPS

284  
OLYMPIC  
MEDALS

AWARD-WINNING  
DINING

INTRAMURAL  
AND  
CLUB SPORTS

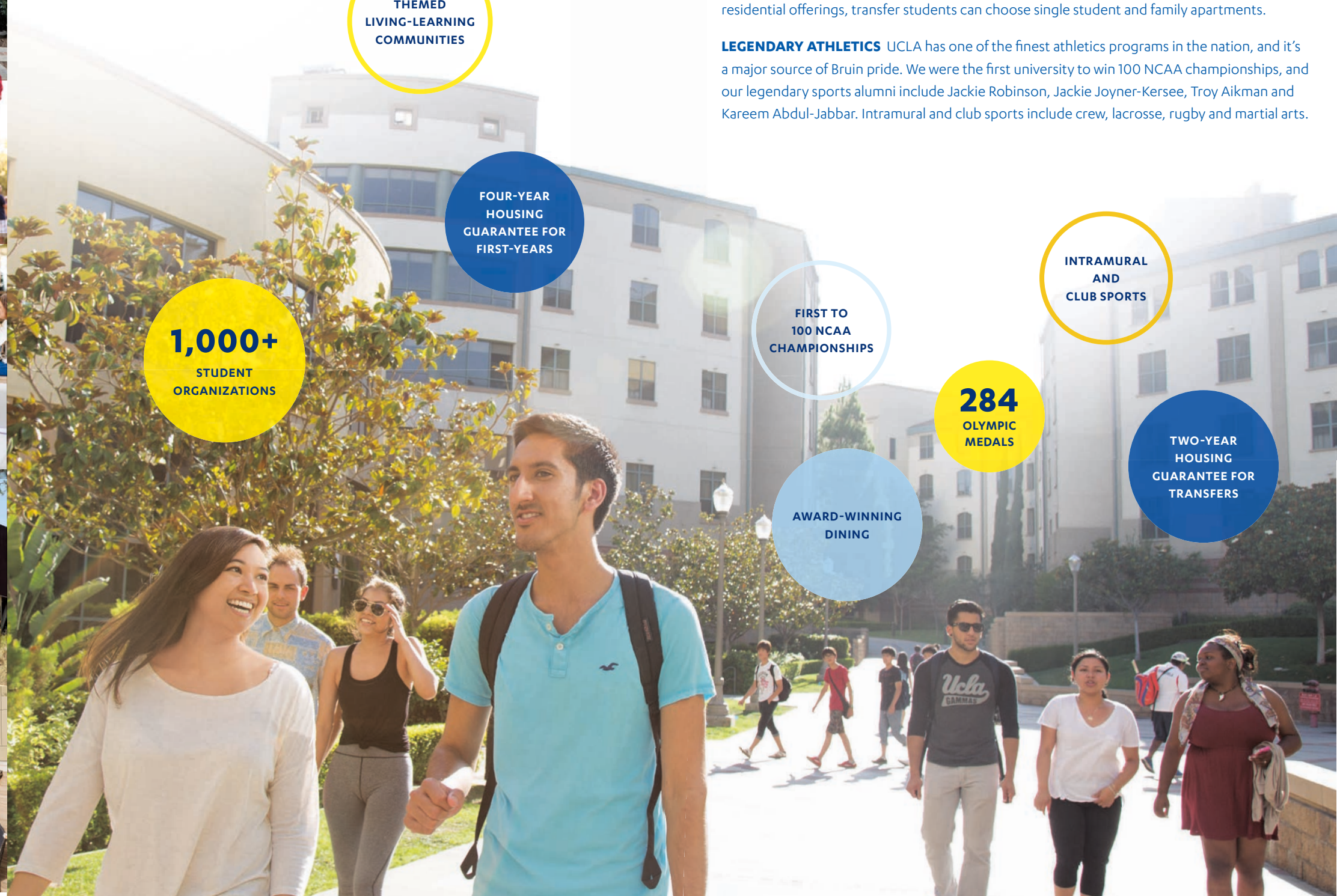
TWO-YEAR  
HOUSING  
GUARANTEE FOR  
TRANSFERS

**THE HILL** Almost all first-years (nearly 100%) choose to live on the Hill, which overlooks nearby classrooms, libraries and labs. On the Hill, the eclectic student body mixes with our awesome Faculty-in-Residence to create a lively mini-metropolis brimming with possibilities. Enjoy a festival. Take a class. Savor the incredible food of our award-winning dining program. Soak up the Bruin spirit. And bask in the sunny California weather at Sunset Canyon Recreation Center pools or tennis courts.

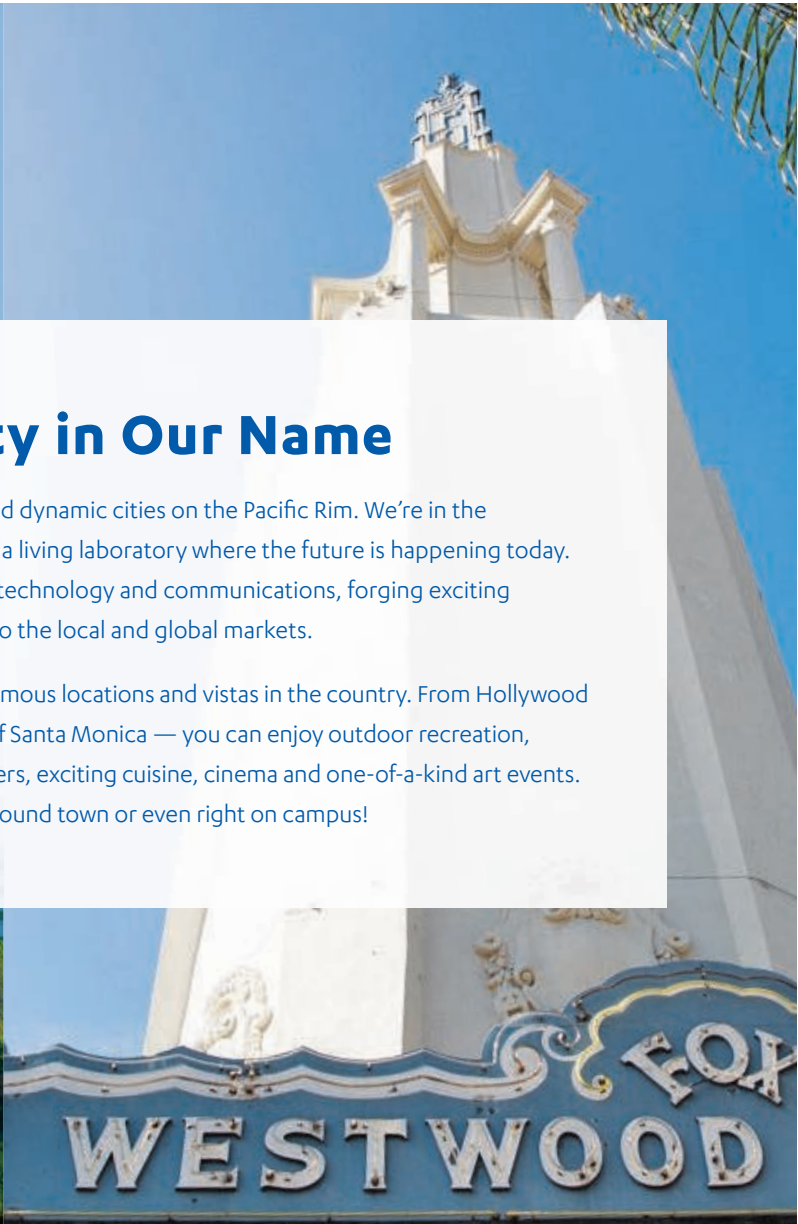
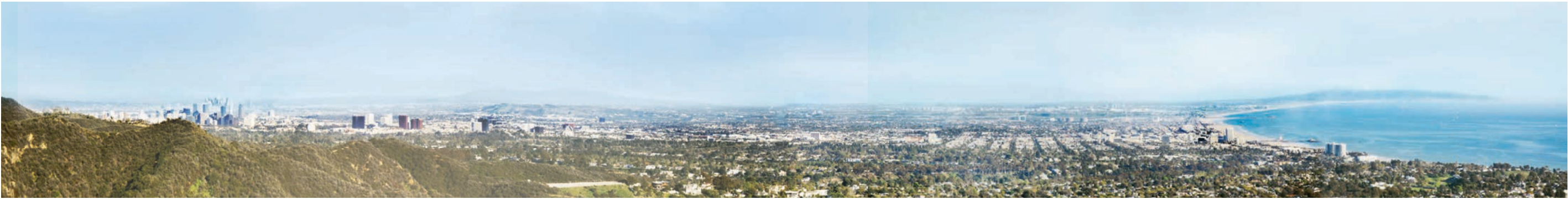
**BELONGING** Explore your culture and identity and expand your perspective as you learn about others. Find common ground and exchange ideas. And take advantage of an array of resources and inclusive spaces that are designed to support you on your unique journey and make it easy for you to belong.

**HOUSING GUARANTEE** UCLA guarantees up to four years of housing in university-owned residences for incoming first-years and two years for transfers. In addition to traditional residential offerings, transfer students can choose single student and family apartments.

**LEGENDARY ATHLETICS** UCLA has one of the finest athletics programs in the nation, and it's a major source of Bruin pride. We were the first university to win 100 NCAA championships, and our legendary sports alumni include Jackie Robinson, Jackie Joyner-Kersey, Troy Aikman and Kareem Abdul-Jabbar. Intramural and club sports include crew, lacrosse, rugby and martial arts.







## The Global City in Our Name

UCLA is in one of the most vibrant and dynamic cities on the Pacific Rim. We're in the crucible of creativity and innovation, a living laboratory where the future is happening today. The city is on the forefront of digital technology and communications, forging exciting business opportunities that reach into the local and global markets.

You'll be close to some of the most famous locations and vistas in the country. From Hollywood to Sunset Boulevard to the beaches of Santa Monica — you can enjoy outdoor recreation, outstanding museums, natural wonders, exciting cuisine, cinema and one-of-a-kind art events. And you might even see film crews around town or even right on campus!







## Financial Aid

**WASHINGTON MONTHLY RANKS UCLA AS NO. 7 AMONG ALL PUBLIC UNIVERSITIES FOR PROVIDING AN EDUCATION THAT FOCUSES ON PUBLIC SERVICE AND UPWARD MOBILITY, WHICH INCLUDES GRADUATING LOW-INCOME STUDENTS. MORE THAN 60% OF OUR UNDERGRADUATES RECEIVE SOME FORM OF FINANCIAL AID, AND 71% OF ALL UCLA STUDENTS GRADUATE WITH NO LOAN DEBT. MANY OF OUR STUDENTS QUALIFY FOR MERIT- AND NEED-BASED SCHOLARSHIPS, GRANTS AND WORK-STUDY PROGRAMS.**

**UNIVERSITY OF CALIFORNIA BLUE AND GOLD OPPORTUNITY PLAN** For California families with incomes below \$80,000, this special program will cover tuition and student services fees.

**UCLA SCHOLARSHIPS** Various merit-based scholarships are available on a competitive basis for California residents, nonresidents and transfer students.

**WE'RE HERE TO HELP** You and your family might have questions about how you'll cover the costs of tuition, housing and other necessities. Our financial aid professionals will make every effort to help you identify resources to pay for your education. For more information, please visit [admission.ucla.edu/tuition-aid](https://admission.ucla.edu/tuition-aid).

## Applying to UCLA

**OUR APPLICANTS** We welcome applications from students throughout California, across the nation and around the world, because we value the variety of experiences and backgrounds our students bring. UCLA enrolls students from nearly 50 states and over 60 countries. We look for students who challenge themselves academically, engage both inside and outside the classroom, and demonstrate the willingness and ability to contribute to the UCLA community. Through a comprehensive evaluation of your curriculum, activities outside of class and answers to personal insight questions, we seek out those students who will continue to make UCLA one of the best universities in the world. UCLA will not consider SAT or ACT scores for admission or scholarship purposes.

**WHEN CAN I APPLY?** The University of California Application becomes available online **August 1**. The application can only be submitted between **October 1–November 30**. All applications for both first-years and transfers must be submitted by **December 1**.

**MORE INFORMATION** For more information on both the first-year and transfer admission processes, please visit: [admission.ucla.edu](https://admission.ucla.edu).



MAJORS

College of Letters and Science

African American Studies  
African and Middle Eastern Studies<sup>1</sup>  
American Indian Studies  
American Literature and Culture  
Ancient Near East and Egyptology  
Anthropology  
Applied Linguistics  
Arabic  
Art History  
Asian American Studies  
Asian Humanities  
Asian Languages and Linguistics  
Asian Religions  
Asian Studies<sup>1</sup>  
Astrophysics  
Atmospheric and Oceanic Sciences  
Atmospheric and Oceanic Sciences/  
Mathematics  
Biochemistry  
Biology<sup>2</sup>  
Biophysics  
Business Economics<sup>1,2,3</sup>  
Central and East European Languages  
and Cultures  
Chemistry  
Chemistry/Materials Science  
Chicana and Chicano Studies  
Chinese  
Classical Civilization  
Climate Science  
Cognitive Science<sup>1</sup>  
Communication<sup>2,5</sup>  
Comparative Literature  
Computational Biology<sup>1</sup>  
Data Theory<sup>1</sup>  
Disability Studies  
Earth and Environmental Science  
Ecology, Behavior and Evolution<sup>2</sup>  
Economics<sup>1,2,3</sup>  
Engineering Geology  
English<sup>2</sup>  
Environmental Science  
European Languages and Transcultural  
Studies  
European Languages and Transcultural  
Studies with French and Francophone  
European Languages and Transcultural  
Studies with German  
European Languages and Transcultural  
Studies with Italian  
European Languages and Transcultural  
Studies with Scandinavian  
European Studies<sup>1</sup>  
Gender Studies  
Geography

Geography/Environmental Studies  
Geology  
Geophysics  
Global Studies<sup>1,2</sup>  
Greek  
Greek and Latin  
History<sup>1</sup>  
Human Biology and Society<sup>1,2</sup>  
International Development Studies<sup>1,2</sup>  
Iranian Studies  
Japanese  
Jewish Studies  
Korean  
Labor Studies  
Latin  
Latin American Studies<sup>1</sup>  
Linguistics  
Linguistics and Anthropology  
Linguistics and Asian Languages  
and Cultures  
Linguistics and Computer Science  
Linguistics and English  
Linguistics and Philosophy  
Linguistics and Psychology  
Linguistics and Spanish  
Marine Biology<sup>2</sup>  
Mathematics<sup>1</sup>  
Mathematics, Applied<sup>1</sup>  
Mathematics/Applied Science<sup>1</sup>  
Mathematics/Economics<sup>2</sup>  
Mathematics, Financial Actuarial<sup>2</sup>  
Mathematics for Teaching<sup>1</sup>  
Mathematics of Computation<sup>1</sup>  
Microbiology, Immunology and  
Molecular Genetics<sup>1,2</sup>  
Middle Eastern Studies  
Molecular, Cell and Developmental  
Biology<sup>2</sup>  
Neuroscience<sup>2</sup>  
Nordic Studies  
Philosophy  
Physics  
Physiological Science<sup>2</sup>  
Political Science<sup>1,2</sup>  
Portuguese and Brazilian Studies  
Psychobiology<sup>1,2</sup>  
Psychology<sup>1,2</sup>  
Russian Language and Literature  
Russian Studies  
Sociology<sup>1,2</sup>  
Southeast Asian Studies  
Spanish  
Spanish and Community and Culture  
Spanish and Linguistics  
Spanish and Portuguese  
Statistics and Data Science<sup>1</sup>

Study of Religion  
Individual Field of Concentration<sup>4</sup>  
Undeclared Humanities<sup>6</sup>  
Undeclared Life Sciences<sup>6</sup>  
Undeclared Physical Sciences<sup>6</sup>  
Undeclared Social Sciences<sup>6</sup>

Fielding School of Public Health  
Public Health<sup>7</sup>

Herb Alpert School of Music  
Ethnomusicology  
Global Jazz Studies  
Music (Composition, Education,  
Performance)  
Music Industry  
Musicology

Luskin School of Public Affairs  
Public Affairs<sup>7</sup>

Samueli School of Engineering  
Aerospace Engineering  
Bioengineering  
Chemical Engineering  
Civil Engineering  
Computer Engineering  
Computer Science  
Computer Science and Engineering  
Electrical Engineering  
Materials Engineering  
Mechanical Engineering  
Undeclared<sup>6</sup>

School of Education  
& Information Studies  
Education and Social Transformation<sup>7</sup>

School of the Arts and  
Architecture  
Architectural Studies<sup>5</sup>  
Art  
Dance  
Design | Media Arts  
World Arts and Cultures  
Individual Field of Concentration<sup>4</sup>

School of Nursing  
Nursing Prelicensure

School of Theater, Film and  
Television  
Film and Television  
Theater  
Individual Field of Concentration<sup>4</sup>

MINORS

Accounting  
African American Studies  
African and Middle Eastern Studies  
African Studies  
American Indian Studies  
Ancient Near East and Egyptology  
Anthropology  
Applied Developmental Psychology  
Arabic and Islamic Studies  
Armenian Studies  
Art History  
Asian American Studies  
Asian Humanities  
Asian Languages  
Atmospheric and Oceanic Sciences  
Bioinformatics  
Biomedical Research  
Brain and Behavioral Health  
Central American Studies  
Central and East European Studies  
Chicana and Chicano Studies  
Classical Civilization  
Cognitive Science  
Community Engagement and  
Social Change  
Comparative Literature  
Conservation Biology  
Creative Writing  
Data Science Engineering  
Digital Humanities  
Disability Studies  
Earth and Environmental Science  
East Asian Studies  
Education Studies  
English  
Entrepreneurship  
Environmental Engineering  
Environmental Systems and Society  
Ethnomusicology  
European Languages and Transcultural  
Studies  
European Languages and Transcultural  
Studies with French and Francophone  
European Languages and Transcultural  
Studies with German  
European Languages and Transcultural  
Studies with Italian  
European Studies  
Evolutionary Medicine  
Film, Television and Digital Media  
Food Studies  
Gender Studies  
Geochemistry  
Geography  
Geography/Environmental Studies  
Geology

Geophysics and Planetary Physics  
Geospatial Information Systems  
and Technologies  
Gerontology  
Global Health  
Global Studies  
Greek Language and Culture  
Hebrew and Jewish Studies  
History  
History of Science, Technology  
and Medicine  
Information and Media Literacy  
International Migration Studies  
Iranian Music  
Iranian Studies  
Israel Studies  
Labor Studies  
Latin American Studies  
Latin Language and Culture  
Lesbian, Gay, Bisexual, Transgender  
and Queer Studies  
Linguistics  
Literature and the Environment  
Mathematical Biology  
Mathematics  
Mathematics for Teaching  
Mexican Studies  
Middle Eastern Studies  
Musicology  
Music Industry  
Neuroscience  
Philosophy  
Pilipino Studies  
Portuguese and Brazilian Studies  
Professional Writing  
Public Affairs  
Public Health  
Russian Language  
Russian Literature  
Russian Studies  
Scandinavian  
Science Education  
Social Data Science  
Social Thought  
Society and Genetics  
South Asian Studies  
Southeast Asian Studies  
Spanish  
Spanish Linguistics  
Statistics and Data Science  
Structural Biology  
Study of Religion  
Systems Biology  
Theater  
Urban and Regional Studies  
Visual and Performing Arts Education

VISIT UCLA

Experience the energy and spirit of UCLA for yourself as you explore campus. Take a guided in-person tour or a virtual tour.

admission.ucla.edu/visit



- 1 Applicants are admitted to pre-major status until prerequisites are satisfactorily completed.
- 2 Transfer applicants should note that demand for this major significantly exceeds space available at the transfer level.
- 3 Transfer students who are admitted to a major outside the Department of Economics are not permitted to transfer into one of the economics majors.
- 4 Not open to entering students
- 5 Open to junior-level applicants only (60 semester/90 quarter units completed by transfer)
- 6 Only first-year-level applicants may apply as undeclared.
- 7 This major is listed under the College of Letters and Science in the UC Application. Applicants are admitted to pre-major status until prerequisites are completed.

NOTE: If you're a transfer student, you must declare a major when you apply, but you may be able to add a minor later. Be sure to consult our Transfer Admission Guide for detailed information.

List of majors and minors accurate at time of printing. Please visit [admission.ucla.edu/majors](https://admission.ucla.edu/majors) for the most up-to-date listings.



escanear para folleto en Español



**WHEN YOU GO TO COLLEGE,  
YOU START TO WONDER, WHAT  
SHOULD I BRING? CLOTHES, YES.  
TOOTHBRUSH, YES. LAPTOP,  
BOOKS, PHONE CHARGER—YES,  
YES, YES. BUT DO YOU KNOW  
WHAT YOU NEED MOST? YOUR  
MIND. YOUR EXPERIENCES,  
THOUGHTS, PASSION, DRIVE,  
DREAMS AND TALENTS. YOUR  
ABILITY TO THINK OUTSIDE THE  
BOX. THE STUFF THAT MAKES  
YOU “YOU.” BECAUSE WE WILL  
TAKE ALL THAT RAW MATERIAL  
AND HELP TO MOLD YOU INTO  
THE PERSON YOU WANT TO BE.  
AND HELP YOU SHAPE THE LIFE  
YOU WANT TO LEAD. THAT’S  
WHAT IT MEANS TO GO TO **UCLA****