

ADMISSION AND SELECTION

UCLA has a long tradition of academic and research excellence, so it's no surprise that academics are an important part of our transfer admission and selection criteria. We encourage you to meet with your counselor for individual advising and to review our **Transfer Admission Guide** (www.admission.ucla.edu/transfer) for specific requirements. At a minimum, you must satisfy the following four requirements:

- 1 Complete 60 semester or 90 quarter units of UC-transferable college credit (junior-level standing)
- 2 Complete the UC 7-course pattern (2 English composition, 1 math, 4 electives). Students are encouraged to take required English and math courses as early as possible. One transferable math course that has a prerequisite of intermediate algebra or higher
- 3 Complete a significant amount of lower-division major preparation for your intended major
- 4 Maintain a GPA of at least 3.2 in all transferable courses. Note that applicants for highly selective majors should present a strong GPA in order to be competitive for admission.

For California Community College Students, ASSIST (www.assist.org) provides detailed information on transferable courses, major prep requirements, and course articulation.

OTHER FACTORS

In addition to required academic preparation, UCLA also evaluates all non-academic and out-of-classroom achievements, including, but not limited to:

- employment
- family responsibilities
- military service
- honors & awards
- extracurricular activities
- volunteer work
- the student's experiences

For more information about our selection process, please review the **Transfer Admission Guide** www.admission.ucla.edu/Prospect/Adm_tr/tradms.htm



Nearly one in three UC students starts at a community college before graduating from a UC campus

TRANSFER STUDENT RESOURCES

ACADEMIC

Center for Accessible Education
www.cae.ucla.edu

Center for Community College Partnerships (CCCP)
www.cccp.ucla.edu

Cluster Program
www.uei.ucla.edu/clustersupper.htm

Honors Program
www.honors.ucla.edu

Meet Your Representative
www.admission.ucla.edu/myrep

Student Transfer Outreach & Mentor Program (STOMP)
www.admission.ucla.edu/stomp

Transfer Alliance Program
www.tap.ucla.edu

UCLA AP Credit Chart
www.admission.ucla.edu/Prospect/APCredit.htm

UCLA Community Programs Office (CPO)
www.cpo.ucla.edu

UC Transfer Admission Planner
uctap.universityofcalifornia.edu

Undergraduate Research
www.ucla.edu/research/undergraduate-research

FAMILY SUPPORT

Early Care and Education
www.ece.ucla.edu

Family Housing
<https://portal.housing.ucla.edu/student-housing/students-with-families>

Transfer Housing
<https://portal.housing.ucla.edu/student-housing/transfer-students>

ADDITIONAL SUPPORT

First To Go
www.firsttogo.ucla.edu

LGBTQ Campus Resource Center
www.lgbtq.ucla.edu

INTERNATIONAL

Dashew Center for International Students and Scholars
www.internationalcenter.ucla.edu

Transfer Student Center
<https://www.transfers.ucla.edu>

UCLA Veteran Resource Center
<https://www.veterans.ucla.edu>



CAMPUS RESOURCES

THE BRUIN RESOURCE CENTER

You will be provided with many resources to assist you with transitioning into your new academic and personal environment. You've made it to UCLA, but you may need advice navigating a new campus full of choices and opportunities. The **Bruin Resource Center** is here to help you hit the ground running by **connecting** you to the university system and offering **support** and the tools you need to **achieve** your desired goals at UCLA and beyond, go to: www.brc.ucla.edu. The BRC provides support through the following:

Bruin Guardian Scholars

This program was created by UCLA and student advocates to help address the unmet needs of the current and former foster youth at UCLA. The focus of the Guardian Scholars program is to build a welcoming community and to promote the wellness, and academic achievements of foster youth students.

Bruin Guardian Scholars Academy

The mission of BGSA is to provide foster youth with necessary educational and psycho-social support to help them graduate high school and enroll in post-secondary education.

Intergroup Relations Program

The Intergroup Dialogue (IGD) Program engages, supports and educates the UCLA community on issues of social identity, interpersonal and intergroup relations/conflict, prejudice reduction, social justice, and imparts valuable multicultural skills to the UCLA community.

Students with Dependents Program

This program provides caring and personalized support to UCLA students who are parents, guardians, and caregivers at the undergraduate, graduate and professional school level. As a part of Student Affairs, our program is committed to helping students succeed, both as parents and scholars.

Transfer Student Center

The Transfer Student Center's mission is to provide transfer students resources and programming that connects them to the university and supports them in achieving their personal, academic, and professional goals.

Undocumented Student Program

This program offers caring and personalized support to undergraduate and graduate undocumented students. We provide a welcoming and safe space to help students navigate UCLA. The BRC offers mentoring and encouragement, guidance on educational strategies and financial opportunities, and tools to succeed academically and personally.

Collegiate Recovery Program

This program was established in 2016 to provide support to UCLA students on their path to recovery from substance use or other addictive behaviors. The Collegiate Recovery Program is dedicated to providing academic, wellness, and emotional support to students who are in recovery or who are considering recovery.

Bruin Underground Scholars Program

In 2019, the Bruin Underground Scholars program was developed to support the academic experiences of students that identify as formerly incarcerated and/or system impacted.

Bruin McKinney Vento Initiative

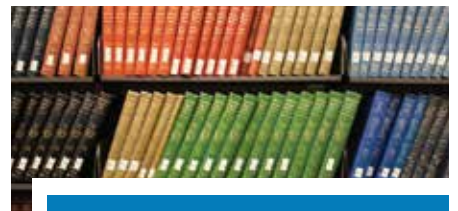
Supports students who have been categorized as homeless by the McKinney-Vento Act. We aim to foster academic success among McKinney-Vento students by providing community, case management, and support with basic needs.



UCLA is ranked #5 in Best Colleges for Veterans among National Universities by US News & World Report

Veteran Resource Center

The Veteran Resource Center provides caring and personalized support to UCLA undergraduate and graduate student veterans. We help our veterans navigate UCLA and provide a welcoming space, mentoring from student veterans, guidance on educational benefits, and tools to succeed academically and personally.



FALL 2021
TRANSFER ADMIT PROFILE*

28,453
Applications

3.96
Average G.P.A.
unweighted

19%
Acceptance Rate

*Fall 2021 Admit figures as of mid-summer. Average G.P.A. varies significantly by major. For a complete list of majors with detailed information, please visit the Admitted Transfer Student Profile webpage at: admission.ucla.edu/prospect/adm_tr.htm



TRANSFER RESOURCES

TYPES OF financial aid

Ranked #4 Best Value Public College - Forbes

The Free Application for Federal Student Aid (FAFSA) can be filed starting October 1 - available at: www.fafsa.gov. Make sure you complete it before the March 2 priority filing deadline. Based on your FAFSA and other information you submit, the Financial Aid Office will determine your eligibility for a variety of funding options, including scholarships, grants, work-study programs and loans. **Undocumented students with AB 540 status qualify for many forms of financial aid, including exemption from nonresident tuition and can apply for aid via the Dream Act application.** International students are not eligible for university, state, or federal financial aid. We urge international students to research scholarship opportunities from private organizations both within the US and your home country.

The UCLA Scholarship Resource Center is available to help you identify scholarships for which you are qualified. Other resources including community service organizations in your hometown, faith-based groups and your college career/college counseling center are options to explore. We also encourage you to initiate a search for additional scholarship resources via the internet. Online searches will reveal various websites and databases dedicated to helping you locate the best scholarship opportunities. For information about searching for UCLA scholarships and other outside scholarships, please review our Scholarship Resource Center website at: www.scholarshipcenter.ucla.edu

Also available to California residents are the UC Blue and Gold Opportunity Plan and the Middle Class Scholarship Program (MCSP). These both qualify as grants, which are rewards that the recipient does not have to repay. These are mostly awarded based on need and require submission of the Free Application for Federal Student Aid (FAFSA) or the California Dream Act application by March 2nd. For more information, visit: <https://admission.universityofcalifornia.edu/tuition-financial-aid/types-of-aid/blue-and-gold-opportunity-plan.html>.

IMPORTANT DATES AND DEADLINES

- AUGUST 1**
Application opens for Fall 2022
- OCTOBER 1**
Filing period opens for Free Application for Federal Student Aid (FAFSA) and Dream Act applications
- NOVEMBER 1 30**
Application filing period
- JANUARY 31**
Deadline to submit your Transfer Academic Update (TAU)
- MARCH 2**
Deadline for applicants to submit your FAFSA or Dream Act application
- LATE-APRIL**
Admission notification (transfer applicants)
- JUNE 1**
Deadline to submit your enrollment deposit, and applications for on-campus housing
- JULY 1**
Deadline for official transcripts

CONTACT INFORMATION AND RESOURCES

UCLA Undergraduate Admission
1147 Murphy Hall
Los Angeles, CA 90095 1436
ugadm@admission.ucla.edu
www.admission.ucla.edu

As a land grant institution, UCLA acknowledges the Gabrielino/Tongva peoples as the traditional land caretakers of Tovaangar (Los Angeles basin, Southern Channel Islands).

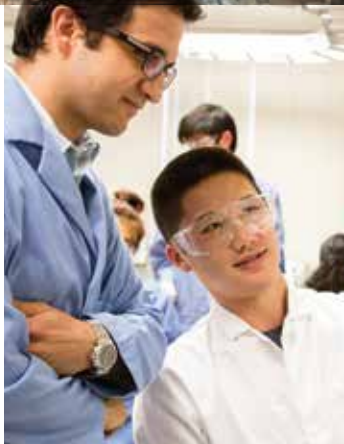
- UCLA Undergraduate Admission
- @uclaadmission
- @uclaadmission

Printed August 2021

FIND THE YOU IN UCLA

HOW DO TRANSFERS MAKE IT HERE? BY KNOWING THAT UCLA IS POSSIBLE.

Preparing for transfer is about getting ready to succeed at UCLA. It's about making the right choices for you, based on your major and your career focus. **We want you here.** Once you're ready to make the transition to UCLA, **we're here to help.** Why? We know that transfer students add to the fabric of our community and arrive at UCLA with a diversity of interests and backgrounds and the intellectual passion to graduate and succeed.

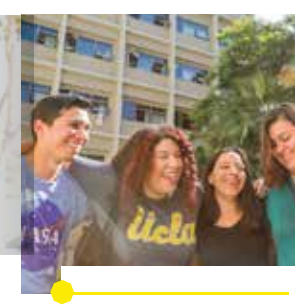
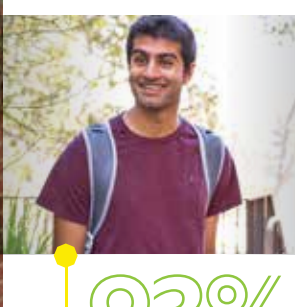
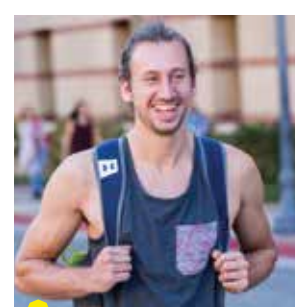


ESTIMATED COST OF ATTENDANCE

	Living in a Residence Hall	Living Off Campus
University Fees	\$13,258	\$13,258
Room & Meals	\$16,763	\$15,951
Books & Supplies	\$1,404	\$1,404
Transportation	\$606	\$1,059
Personal	\$1,467	\$1,701
Health Insurance	\$2,799	\$2,799
TOTAL	\$36,297*	\$36,172*

*These figures are accurate at the time of printing. For up-to-date costs, visit www.financialaid.ucla.edu. **Non-California residents must pay an additional Nonresident Supplemental Tuition of \$29,754 in addition to the totals listed.**

70% of entering transfer students receive financial assistance



#1 UCLA ranked No. 1 college for transfer students *(2018 money.com)

33% of upperclassmen come in as transfer students

93% of admitted transfers come from a California community college

85% of transfers graduate in just over two years at UCLA