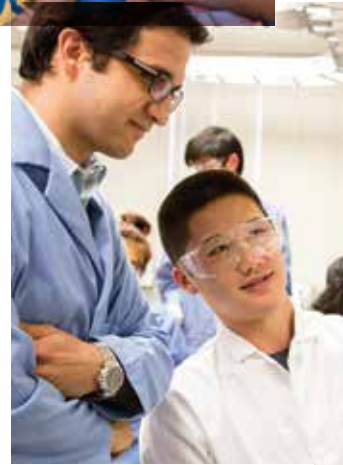




Top 10 of public schools for the public good. -Washington Monthly



## Transfer Resources



## Types of Financial Aid

The **Free Application for Federal Student Aid (FAFSA)** can be filed starting **October 1** - available at: [www.fafsa.gov](http://www.fafsa.gov). Make sure you complete it before the March 2 priority filing deadline. Based on your FAFSA and other information you submit, the Financial Aid Office will determine your eligibility for a variety of funding options, including scholarships, grants, work-study programs and loans. **Undocumented students with AB 540 status qualify for many forms of financial aid, including exemption from nonresident tuition and can apply for aid via the CA Dream Act application.** International students are not eligible for university, state, or federal financial aid. We urge international students to research scholarship opportunities from private organizations both within the US and your home country.

**UCLA Center for Scholarships & Scholar Enrichment** is available to help you identify scholarships for which you are qualified. Other resources including community service organizations in your hometown, faith-based groups and your college career/college counseling center are options to explore. For information about searching for UCLA scholarships and other outside scholarships, please review our Scholarship Resource Center website at: [www.scholarshipcenter.ucla.edu](http://www.scholarshipcenter.ucla.edu).

Also available to California residents are the **UC Blue and Gold Opportunity Plan** and the **Middle Class Scholarship Program (MCSP)**. These both qualify as grants, which are rewards that the recipient does not have to repay. These are mostly awarded based on need and require submission of the Free Application for Federal Student Aid (FAFSA) or the California Dream Act application by March 2nd.

As of Fall 2022, UC's **Native American Opportunity Plan** ensures systemwide Tuition and Students services are fully covered for California students who are enrolled in federally recognized Native American, American Indian, and Alaska Native tribes. Applicants are required to file the FAFSA and may be asked to document federal tribal membership.

For more information, visit: <https://admission.universityofcalifornia.edu/tuition-financial-aid>.

## Estimated Costs for Academic Year 2024–2025

(all fees are subject to change\*)

	UCLA Residence Hall	Off-Campus Apartment	Commuter
University Fees	\$15,154	\$15,154	\$15,154
Food & Housing	\$18,369	\$18,609	\$8,019
Books, Course Materials, Supplies, and Equipment	\$1,641	\$1,641	\$1,641
Transportation	\$778	\$1,458	\$2,451
Personal	\$2,226	\$2,340	\$2,535
Health Insurance†	\$3,842	\$3,842	\$3,842
Loan Fees	\$117	\$117	\$117
<b>Total - CA Residents</b>	<b>\$42,127</b>	<b>\$43,161</b>	<b>\$33,759</b>
Nonresident Supplemental Tuition	\$34,200	\$34,200	\$34,200
<b>Total - Nonresidents</b>	<b>\$76,327</b>	<b>\$77,361</b>	<b>\$67,959</b>

\* For current information: <https://admission.ucla.edu/tuition-aid/tuition-fees>  
 † The UC SHIP health insurance requirement and fees can be waived if a student already has adequate insurance coverage.

## IMPORTANT DATES AND DEADLINES

- AUGUST 1:** Application opens for Fall 2025
- OCTOBER 1–DECEMBER 2:** Application submission window for Fall 2025 applicants. UCLA does not offer early action/early decision
- DECEMBER 1:** Filing period expected to be available on or before December 1 for Free Application for Federal Student Aid (FAFSA) and Dream Act Application for all applicants; filing period opens for GPA Verification Form (required for CA residents only for Cal Grant consideration)
- JANUARY 31:** Deadline to submit your Transfer Academic Update (TAU)
- MARCH 2:** Deadline for applicants to submit your FAFSA or Dream Act application
- LATE-APRIL:** Admission notification (transfer applicants)
- JUNE 1:** Deadline to submit your enrollment deposit, and applications for on-campus housing
- JULY 1:** Deadline for official transcripts

## CONTACT INFORMATION AND RESOURCES

UCLA Undergraduate Admission  
 1147 Murphy Hall  
 Los Angeles, CA 90095-1436  
[ugadm@admission.ucla.edu](mailto:ugadm@admission.ucla.edu)  
[www.admission.ucla.edu](http://www.admission.ucla.edu)



As a land grant institution, UCLA acknowledges the Gabrielino/Tongva peoples as the traditional land caretakers of Tovaangar (Los Angeles basin, Southern Channel Islands).

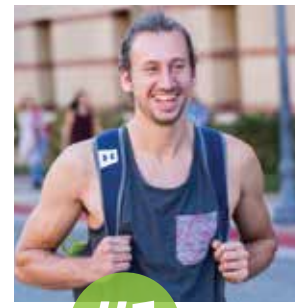
- UCLA Undergraduate Admission
- @uclaadmission
- @uclaadmission

Printed August 2024

FIND THE YOU  
 in **UCLA**

## How do transfers make it here? By knowing that UCLA is possible.

Preparing for transfer is about getting ready to succeed at UCLA. It's about making the right choices for you, based on your major and your career focus. **We want you here.** Once you're ready to make the transition to UCLA, **we're here to help.** Why? We know transfer students bring unique perspectives and experiences that enrich our campus community, and we believe in your intellectual passion and determination to succeed.



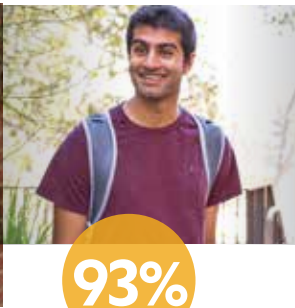
**#1**

UCLA ranked **No. 1** college for transfer students \*(2018 money.com)



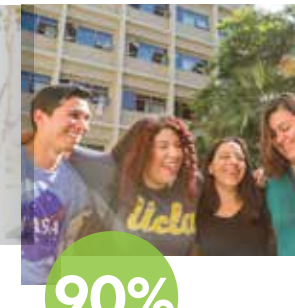
**1/3**

**1/3 of upperclassmen** came in as a transfer



**93%**

of admitted transfers come from a **California community college**



**90%**

of transfers graduate in **three years or less** at UCLA



**42%**

of entering transfer students are **first generation**

# Admission and Selection

UCLA has a long tradition of academic and research excellence, so it's no surprise that academics are an important part of our transfer admission and selection criteria. We encourage you to meet with your counselor for individual advising and to review our **Transfer Admission Guide** ([www.admission.ucla.edu/tag](http://www.admission.ucla.edu/tag)) for specific requirements. At a minimum, you must satisfy the following four requirements:

- 1 Complete 60 semester or 90 quarter units of UC-transferable college credit (junior-level standing)
- 2 Complete the UC 7-course pattern (2 English composition, 1 math, 4 electives). Students are encouraged to take required English and math courses as early as possible. One transferable math course that has a prerequisite of intermediate algebra or higher
- 3 Complete a significant amount of lower-division major preparation for your intended major
- 4 Maintain a GPA of at least 3.2 in all transferable courses. Note that applicants for highly selective majors should present a strong GPA in order to be competitive for admission.

For California Community College Students, **ASSIST** ([www.assist.org](http://www.assist.org)) provides detailed information on transferable courses, major prep requirements, and course articulation.

For students transferring from out-of-state or California four-year institution, the UCLA Transferability Guide is a great resource. (<https://admission.ucla.edu/transferability>)

## Other Factors

In addition to required academic preparation, UCLA also evaluates all non-academic and out-of-classroom achievements, including, but not limited to:

- employment
- family responsibilities
- military service
- honors & awards
- extracurricular activities
- volunteer work
- the student's experiences

For more information about our selection process, please review the **Transfer Admission Guide** [www.admission.ucla.edu/tag](http://www.admission.ucla.edu/tag)

## Transfer Resources

**Academic Academic Advancement Program**  
<https://www.aap.ucla.edu>

**Career Center**  
<https://career.ucla.edu>

**Center for Accessible Education**  
[www.cae.ucla.edu](http://www.cae.ucla.edu)

**Center for Community College Partnerships (CCCP)**  
[www.cccp.ucla.edu](http://www.cccp.ucla.edu)

**Cluster Program**  
[www.uei.ucla.edu/clustersupper.htm](http://www.uei.ucla.edu/clustersupper.htm)

**Honors Program**  
[www.honors.ucla.edu](http://www.honors.ucla.edu)

**Meet Your Representative**  
[www.admission.ucla.edu/myrep](http://www.admission.ucla.edu/myrep)

**Study Abroad**  
<https://ieo.ucla.edu>

**Transfer Alliance Program**  
[www.tap.ucla.edu](http://www.tap.ucla.edu)

**UCLA AP Credit Chart**  
[www.admission.ucla.edu/Prospect/APCredit.htm](http://www.admission.ucla.edu/Prospect/APCredit.htm)

**UC Transfer Admission Planner**  
<https://uctap.universityofcalifornia.edu/students>

**Undergraduate Research**  
[www.admission.ucla.edu/explore/research](http://www.admission.ucla.edu/explore/research)

**Housing & Family Support  
Early Care and Education**  
[www.ece.ucla.edu](http://www.ece.ucla.edu)

**Family Housing**  
<https://portal.housing.ucla.edu/student-housing/students-with-families>

**Transfer Housing**  
<https://portal.housing.ucla.edu/student-housing/transfer-students>

**Finding Community  
Black Bruin Resource Center**  
[www.blackbruinresourcecenter.ucla.edu](http://www.blackbruinresourcecenter.ucla.edu)

**First To Go**  
[www.firsttogo.ucla.edu](http://www.firsttogo.ucla.edu)

**LGBTQ Campus Resource Center**  
[www.lgbtq.ucla.edu](http://www.lgbtq.ucla.edu)

**Student Organizations, Leadership, and Engagement (SOLE)**  
<https://sole.ucla.edu>

**Student Transfer Outreach & Mentor Program (STOMP)**  
[www.admission.ucla.edu/stomp](http://www.admission.ucla.edu/stomp)

**Transfer Student Center**  
[www.transfers.ucla.edu](http://www.transfers.ucla.edu)

**UCLA Veteran Resource Center**  
[www.veterans.ucla.edu](http://www.veterans.ucla.edu)

**UCLA Community Programs Office (CPO)**  
[www.cpo.ucla.edu](http://www.cpo.ucla.edu)

**INTERNATIONAL  
Dashew Center for International Students and Scholars**  
[www.internationalcenter.ucla.edu](http://www.internationalcenter.ucla.edu)

Nearly one in three UC students starts at a community college before graduating from a UC campus



#3

UCLA is ranked #3 in Best Colleges for Veterans among National Universities by US News & World Report



## Campus Resources The Bruin Resource Center

We offer a wealth of resources to ease your transition into UCLA's vibrant academic and social landscape. You've made it to UCLA, but you may need advice navigating a new campus full of choices and opportunities. The **Bruin Resource Center** is here to help you hit the ground running by **connecting** you to the university system and offering **support** and the tools you need to **achieve** your desired goals at UCLA and beyond, go to: [www.brc.ucla.edu](http://www.brc.ucla.edu). The BRC provides support through the following:

### Bruin Guardian Scholars

This program was created by UCLA and student advocates to help address the unmet needs of the current and former foster youth at UCLA. The focus of the Guardian Scholars program is to build a welcoming community and to promote the wellness, and academic achievements of foster youth students.

### Bruin Guardian Scholars Academy

The mission of BGSA is to provide foster youth with necessary educational and psychosocial support to help them graduate high school and enroll in post-secondary education.

### Bruin McKinney Vento Initiative

Supports students who have been categorized as homeless by the McKinney-Vento Act. We aim to foster academic success among McKinney-Vento students by providing community, case management, and support with basic needs.

### Bruin Underground Scholars Program

In 2019, the Bruin Underground Scholars program was developed to support the academic experiences of students that identify as formerly incarcerated and/or system impacted.

### Collegiate Recovery Program

This program was established in 2016 to provide support to UCLA students on their path to recovery from substance use or other addictive behaviors. The Collegiate Recovery Program is dedicated to providing academic, wellness, and emotional support to students who are in recovery or who are considering recovery.

### Students with Dependents Program

This program provides caring and personalized support to UCLA students who are parents, guardians, and caregivers at the undergraduate, graduate and professional school level. As a part of Student Affairs, our program is committed to helping students succeed, both as parents and scholars.

### Undocumented Student Program

This program offers caring and personalized support to undergraduate and graduate undocumented students. We provide a welcoming and safe space to help students navigate UCLA. The BRC offers mentoring and encouragement, guidance on educational strategies and financial opportunities, and tools to succeed academically and personally.

### Black Bruin Resource Center

The mission of the UCLA BBRC is to uplift, support, and inspire the UCLA Black and African Diaspora Community. With the goal of cultivating community, family, and power, the UCLA BBRC serves as a space where the community can call home.

### Transfer Student Center

The Transfer Student Center's mission is to provide transfer students resources and programming that connects them to the university and supports them in achieving their personal, academic, and professional goals.

### Veteran Resource Center

The Veteran Resource Center provides caring and personalized support to UCLA undergraduate and graduate student veterans.

<https://admission.ucla.edu/apply/veterans>

Fall 2024  
Transfer Admit  
Profile\*

27,157  
Applications

3.85  
Average G.P.A. unweighted

22%  
Acceptance Rate

\*Admit figures as of mid-summer. Average G.P.A. varies significantly by major. For a complete list of majors with detailed information, please visit the Admitted Transfer Student Profile webpage at: <https://admission.ucla.edu/apply/transfer>